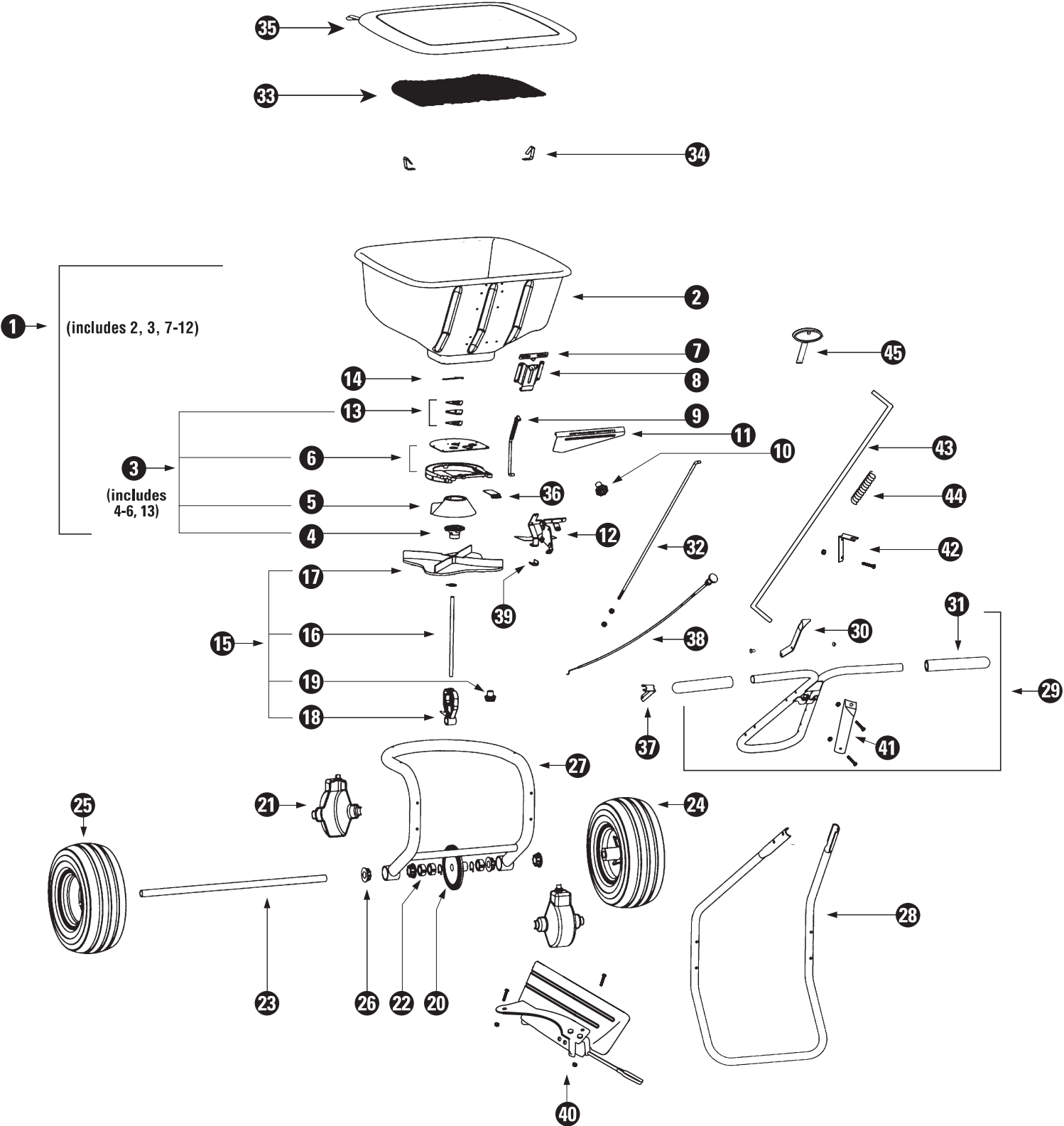


# Parts Diagram - Model 2000 SR



# Ordering Parts

See diagram for assistance in identifying specific parts.

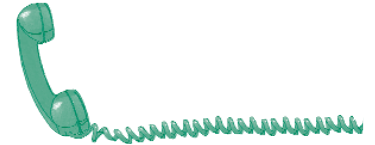
For parts orders, call 1-614-559-2705. (Note: Sales of parts for Andersons spreaders are handled by PSB Company.)

**IMPORTANT: When ordering replacement parts, always provide the following information:**

- 1) Part number (DO NOT use key numbers when ordering parts. ALWAYS use part numbers.)
- 2) Part description
- 3) Model 2000 SR (product code ASP8091)

KEY #	PART DESCRIPTION	PART #
1	Hopper Assembly	791036
2	*Hopper	790115
3	*Helical Cone Assembly	780945
4	Helical Cone Retainer/Bearing Shield	792001
5	Helical Cone	780941
6	Shutoff Plate Retainer/Shutoff Plate Base	792002
7	*Pointer	790340
8	*Rate Control Housing	790321
9	*Rate Control Rod Assembly	790395
10	*Rate Control Knob/Washer	792003
11	*Rate Control Plate	790330
12	*Pivot Lever/Main Shutoff Plate Assembly	790266
13	*Agitator Bearing, Set	792004
14	Agitator Pin	780100
15	Rotor and Gear Carrier Assembly	780195
16	Rotor Shaft	790020
17	Rotor Plate	780191
18	Gear Carrier, Complete	780155
19	Pinion Gear	780122
20	Ring Gear	780121
21	Gearbox Cover Half (set of 2)	780110
22	Axle Collar (each)	780200
23	Axle, Complete	790015
24	Drive Wheel	790120
25	Idler Wheel	790130
26	Axle Bearing (set of 4)	790151
27	Frame Assembly (includes 26)	790046
28	Rest	790060
29	Handle Assembly (includes 30, 31)	790076
30	Main Shutoff Lever	790215
31	Hand grips (set of 2)	1000061
32	Main Shutoff Control Rod	790250
33	Hopper Screen	790141
34	Hopper Screen Clip (set of 2)	780440
35	Hopper Cover	790161
36	Auxiliary Shutoff Plate	780220
37	Auxiliary Shutoff Cable Bracket	790550
38	Auxiliary Shutoff Control Cable	790490
39	Auxiliary Shutoff Clamp	790560
40	Deflector Shield, Complete	1000060
41	Deflector Bracket Assembly	1000058
42	Deflector Lever Bracket	1000059
43	Deflector Control Rod	1000053
44	Spring for Deflector Rod	1000052
45	Calibration Key (see calibration instructions)	791082

All part and subassembly kits include necessary fasteners and assembly instructions.  
 \*Indicates parts included with hopper assembly



**For More Information Call...**

**1-800-225-2639**  
 (U.S. Only)

The Andersons toll-free ProTurf Helpline. This helpline is provided to give you more information on Andersons Professional Products.

.....



**Or Visit Our Website At ...**

[www.andersonsturf.com](http://www.andersonsturf.com)  
[www.andersonsturf-intl.com](http://www.andersonsturf-intl.com)



The Andersons, Inc.  
 480 W. Dussel Dr.  
 Maumee, OH 43537 USA