

STORGARD®

THE DOME™ TRAP

QUICK-CHANGE™

“BROAD SPECTRUM BEETLE ATTRACTANTS”



Assembly Instructions

The **NEW QUICK-CHANGE™, DOME™** attracts and captures most stored product beetles, both male and female, in just 4 easy steps.

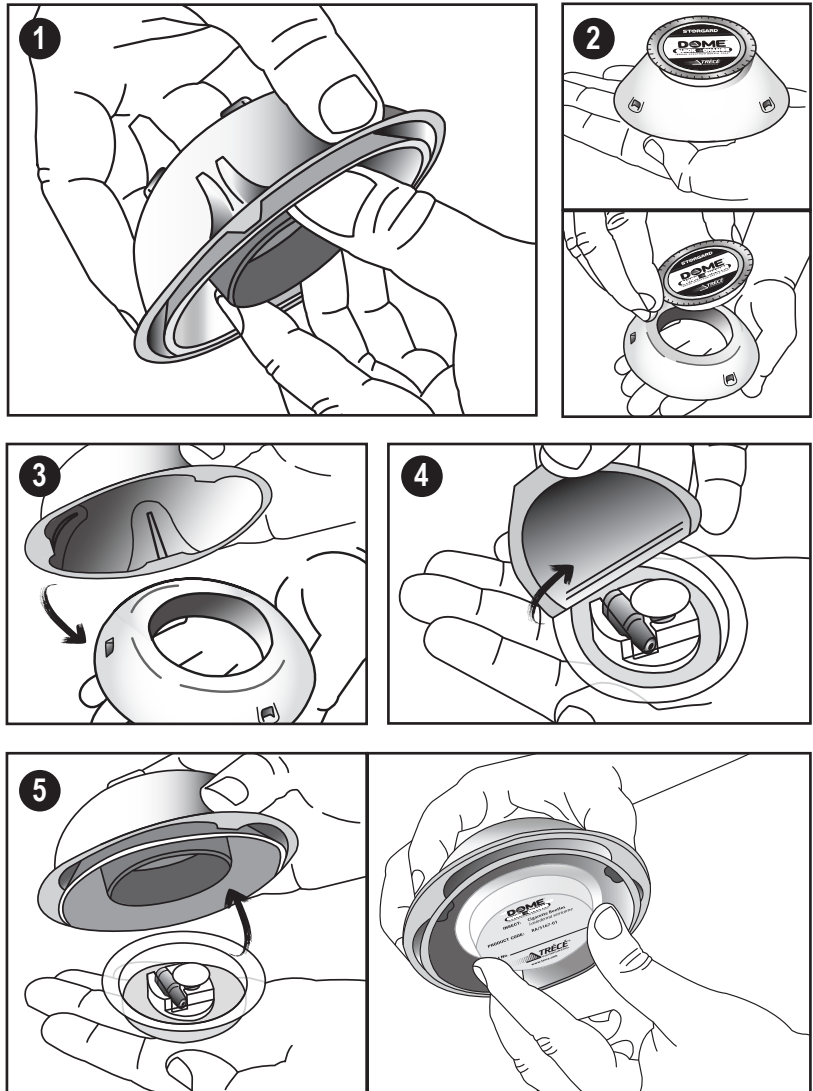
1. Open the DOME trap by gently squeezing the top of the DOME with thumb and fore finger.

2. Remove the lure tray from inside the trap.

3. Put the DOME top back onto the DOME bottom by clicking the tabs into place.

4. Peel and remove foil cover from the top of the lure tray.

5. Snap lure tray onto the bottom of the DOME trap.



Visit our website: www.trece.com or call 1-866-785-1313



TRÉCÉ
INCORPORATED

INSECT PHEROMONE & KAIROMONE SYSTEMS

Your Edge – And Ours – Is Knowledge.

© 2015, Trécé Inc., Adair, OK USA • TRECE, PHEROCON, STORGARD, CIDETRAK and IPM PARTNER are registered trademarks of Trece, Inc., Adair, OK USA

STORGARD®



THE DOME™ TRAP QUICK CHANGE™ “BROAD SPECTRUM BEETLE ATTRACTANTS”

Insect listing

Common Name	Scientific Name	Common Name	Scientific Name
1. American Black Flour Beetle	<i>Tribolium audax</i>	16. Lesser Mealworm Beetle	<i>Alphitobius diaperinus</i>
2. American Spider Beetle	<i>Mezium americanum</i>	17. Longheaded Flour Beetle	<i>Latheticus oryzae</i>
3. Antlike Flower Beetle	<i>Anthicus spp.</i>	18. Maize Weevil	<i>Sitophilus zeamais</i>
4. Cigarette Beetle	<i>Lasioderma serricorne</i>	19. Merchant Grain Beetle	<i>Oryzaephilus mercator</i>
5. Confused Flour Beetle	<i>Tribolium confusum</i>	20. Picnic Beetle	<i>Glischrochilus quadrisignatus</i>
6. Depressed Flour Beetle	<i>Palorus subdepressus</i>	21. Predaceous Hister Beetle,	<i>Carcinops pumilio</i>
7. Drugstore Beetle	<i>Stegobium paniceum</i>	22. Red Flour Beetle	<i>Tribolium castaneum</i>
8. Dusky Sap Beetle	<i>Carpophilus lugubris Murray</i>	23. Redlegged Ham Beetle	<i>Necrobia rufipes</i>
9. Flat/Rusty Grain Beetle	<i>Cryptolestes spp.</i>	24. Rice Weevil	<i>Sitophilus oryzae</i>
10. Foreign Grain Beetle	<i>Ahasverus advena</i>	25. Sawtoothed Grain Beetle	<i>Oryzaephilus surinamensis</i>
11. Golden Spider Beetle	<i>Niptus hololeucus</i>	26. Seedcorn Beetle	<i>Stenolophus lecontei</i>
12. Granary Weevil	<i>Sitophilus granarius</i>	27. Slender Seedcorn Beetle,	<i>Clivina impressifrons LeConte</i>
13. Hairy Fungus Beetle	<i>Typhaea stercorea</i>	28. Small Eyed Flour Beetle	<i>Palorus ratzeburgii</i>
14. Khapra Beetle	<i>Trogoderma granarium</i>	29. Warehouse Beetle	<i>Trogoderma variabile</i>
15. Larder Beetle	<i>Dermestes lardarius</i>	30. Other small beetles	



INSECT PHEROMONE & KAIROMONE SYSTEMS
Your Edge – And Ours – Is Knowledge.