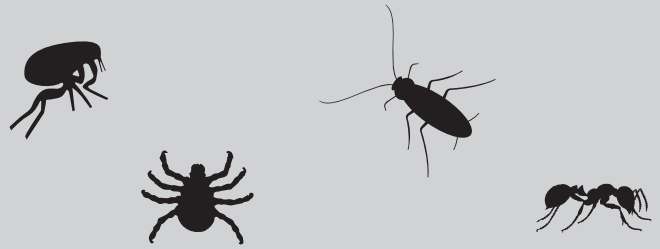


Precor[®] 2000[™]

PLUS
PREMISE SPRAY



**TREATS 2000 SQUARE FEET
CONTAINS PRECOR[®] INSECT GROWTH REGULATOR PLUS ADULTICIDES
CONTROLS FLEAS, TICKS, ANTS, COCKROACHES
FAST-ACTING FORMULA
PREVENTS REINFESTATION AND FLEA BUILD-UP FOR 210 DAYS**

SPECIMEN LABEL

ACTIVE INGREDIENTS:

(S)-Methoprene (CAS #65733-16-6)	0.085%
Permethrin (CAS #52645-53-1)	0.350%
Phenothrin (CAS #26002-80-2)	0.300%
N-octyl bicycloheptene dicarboximide (CAS #113-48-4)	2.000%
Piperonyl butoxide (CAS #51-03-6)	1.400%
OTHER INGREDIENTS*:	95.865%
TOTAL:	100.000%

*Contains petroleum distillates
EPA Reg. No. 2724-490

**KEEP OUT OF REACH OF CHILDREN
CAUTION
SEE ADDITIONAL PRECAUTIONARY STATEMENTS**

PRECAUTIONARY STATEMENTS HAZARDS TO HUMANS AND DOMESTIC ANIMALS – CAUTION

Avoid contact with skin or clothing. Wash thoroughly with soap and water after handling. Prolonged or frequently repeated skin contact may cause allergic reactions in some individuals.

FIRST AID

IF ON SKIN OR CLOTHING • Take off contaminated clothing. • Rinse skin immediately with plenty of water for 15-20 minutes. • Call a poison control center or doctor for treatment advice.

IF SWALLOWED • Call a poison control center or doctor immediately for treatment advice. • Do not induce vomiting unless told to do so by a poison

control center or doctor. • Do not give **ANY** liquid to the person. • Do not give anything by mouth to an unconscious person

In case of emergency, call 1-800-248-7763 or a poison control center. Have the product container or label with you when calling a poison control center or doctor or going for treatment.

NOTE TO PHYSICIAN/VETERINARIAN: Contains petroleum distillates – vomiting may cause aspiration pneumonia.

DIRECTIONS FOR USE

It is a violation of Federal Law to use this product in a manner inconsistent with its labeling.

Precor[®] 2000[™] Plus kills adult fleas, hatching flea eggs and ticks, cockroaches, and ants. PRECOR[®], the unique ingredient in Precor 2000 Plus provides 210 days' protection by preventing eggs from ever developing into biting fleas. For best results, use Precor 2000 Plus with Petcor[®] on-animal products for complete control of fleas and ticks.

**READ ENTIRE LABEL BEFORE USE.
NOT FOR USE ON HUMANS OR PETS.**

SHAKE WELL BEFORE USING.

FOR USE IN THE HOME/GARAGE/KENNEL

- Identify treatment areas**, especially those where pets frequent, such as in and around pet's sleeping and resting areas. These are the primary areas where fleas, their eggs, and ticks are found. Before treatment, a test application should be made to upholstery, drapery, light-colored, delicate fabrics, or wood surfaces in an inconspicuous place.

